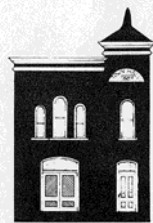


West Chicago

Historical Map Inference Lab

A 6th Grade Digital Mini-Kit

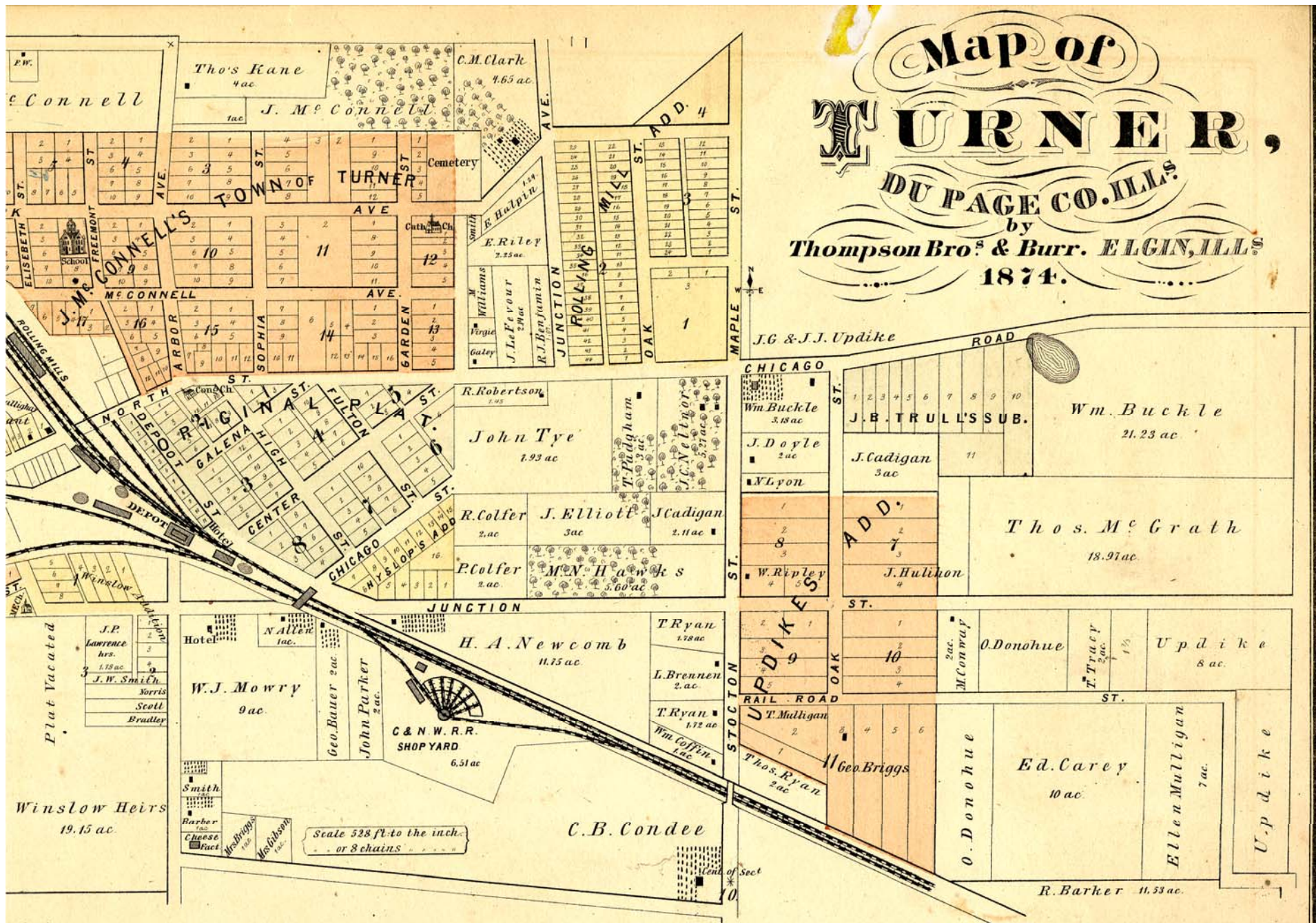
presented by West Chicago City Museum



**WEST
CHICAGO
CITY
MUSEUM**

KEY	
11' FIRE WALL 6 IN. AS ROOF	12' -
13' -	14' -
15' -	16' -
17' -	18' -
19' -	20' -
21' -	22' -
23' -	24' -
25' -	26' -
27' -	28' -
29' -	30' -
31' -	32' -
33' -	34' -
35' -	36' -
37' -	38' -
39' -	40' -
41' -	42' -
43' -	44' -
45' -	46' -
47' -	48' -
49' -	50' -
51' -	52' -
53' -	54' -
55' -	56' -
57' -	58' -
59' -	60' -
61' -	62' -
63' -	64' -
65' -	66' -
67' -	68' -
69' -	70' -
71' -	72' -
73' -	74' -
75' -	76' -
77' -	78' -
79' -	80' -
81' -	82' -
83' -	84' -
85' -	86' -
87' -	88' -
89' -	90' -
91' -	92' -
93' -	94' -
95' -	96' -
97' -	98' -
99' -	100' -

MAP #1



Investigate: Map #1

1. What is the title of the map?
2. What year was this map made?
3. Some of the streets in downtown have changed names over the years. Give the current name for these streets:

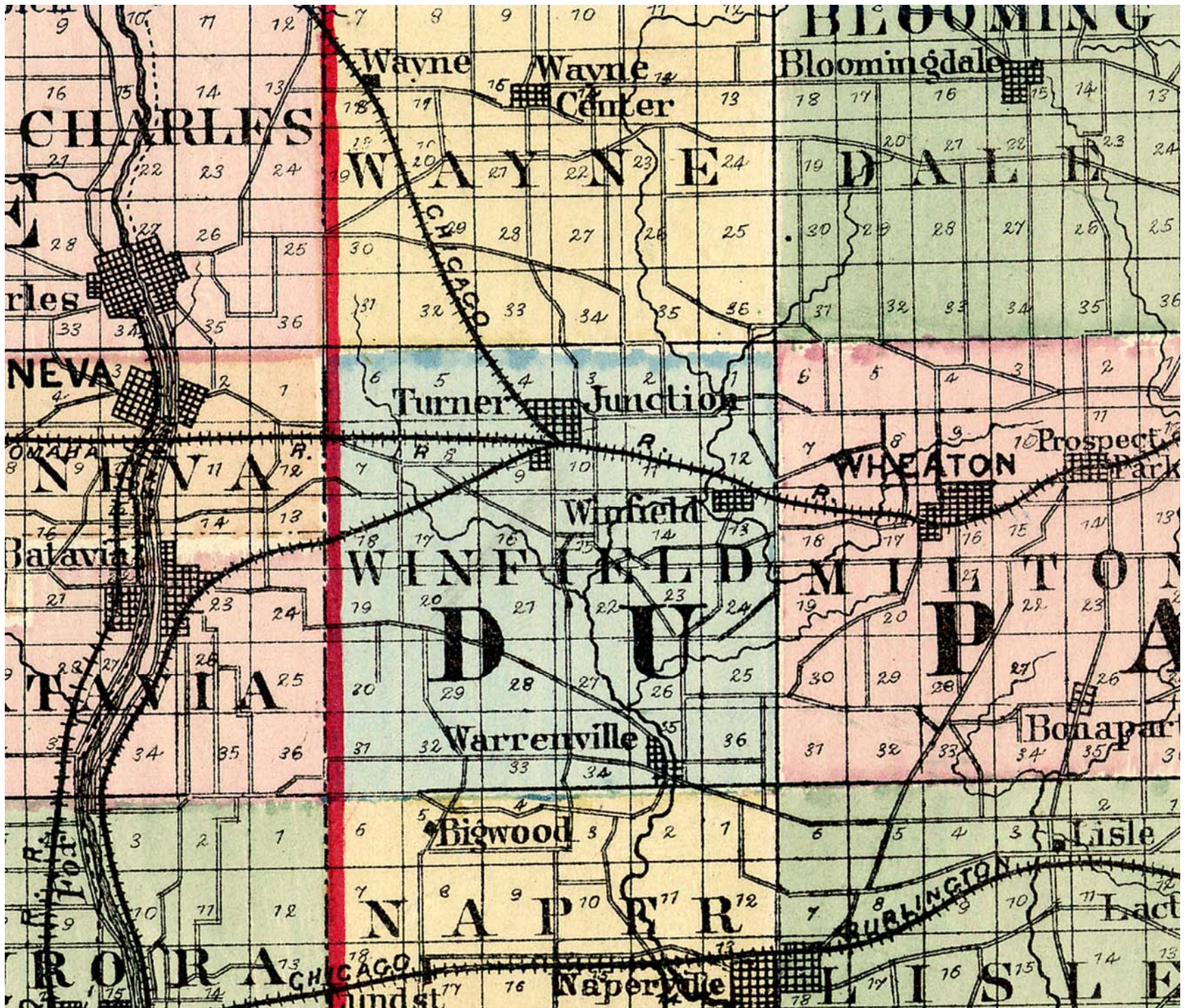
Depot Street:

North Street:

Chicago Road:

Why might these names have changed over time?

4. What other mode of transportation is represented on this map (besides roadways)?
5. What public community places do you see on the map? Do these still exist today?
6. Based on evidence from the map, what types of jobs do you think people in Turner held at this time? What industries are located in town?



MAP #2

Investigate: Map #2

This is a detail of a DuPage County map made in 1875. "Turner Junction", near the middle, is present-day West Chicago.

1. Highlight the railways with red marker.
2. Highlight the waterways with blue marker.
3. Highlight the major roadways with green marker.
4. What geographic factors made the area of Winfield Township an ideal place for folks to settle in the late 1800s?
5. What transportation factors helped Winfield Township be a desirable place to settle?
6. What advantages did Turner Junction have as the first railroad junction in the state of Illinois?
7. Would there be any disadvantages?

GRAHAM BURNHAM'S Official Map of **TURNER..** DU PAGE COUNTY, ILLINOIS

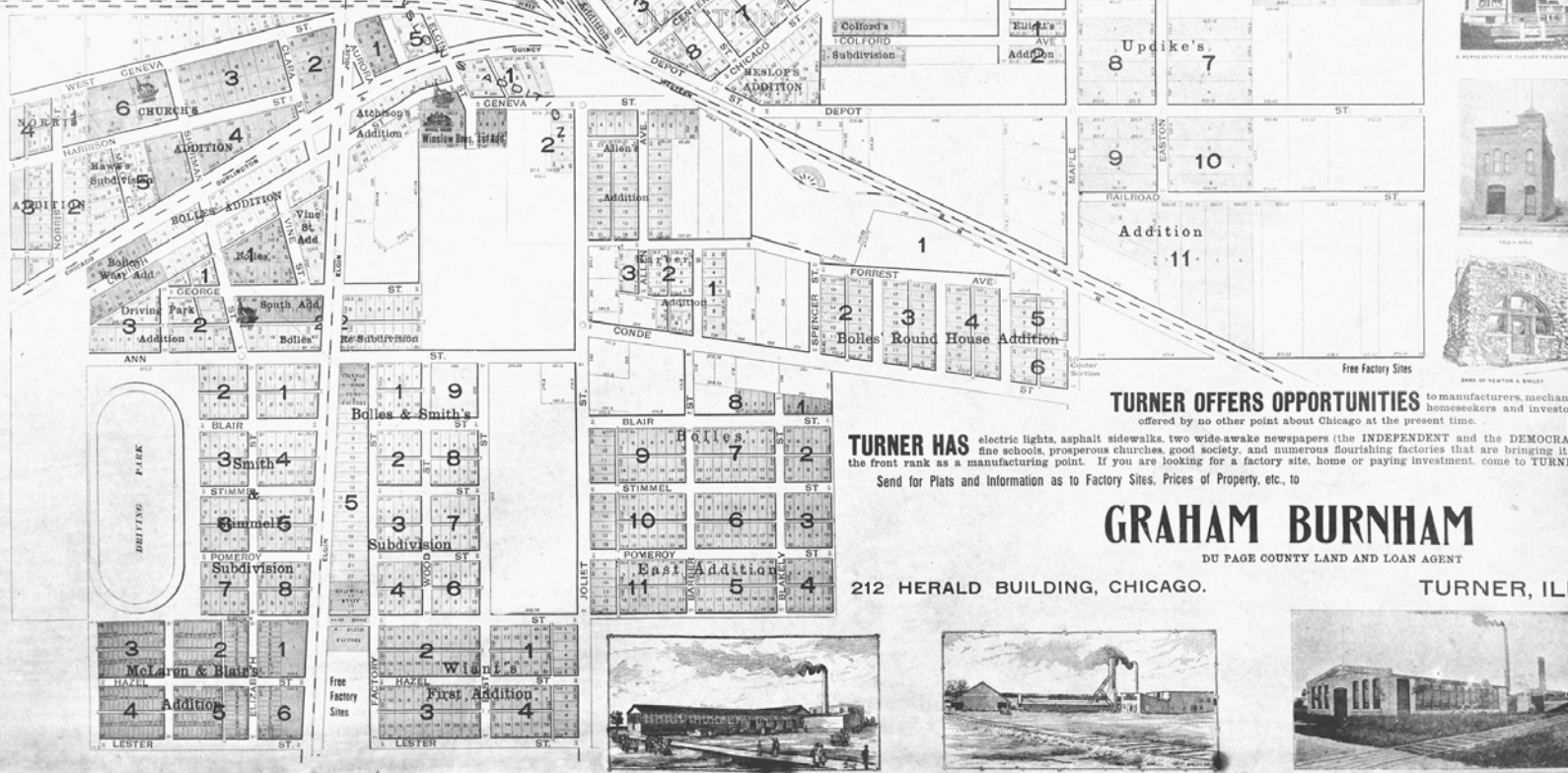
CHICAGO'S COMING GREAT MANUFACTURING SUBURB

LOCATED at the junction of the Chicago & North-Western Railway, the Chicago, Burlington & Quincy Railway, and the Outer Belt Line, giving it unequalled shipping facilities with Chicago freight rates.

MAP #3

Chicago & Northwestern
Railroad Great Car
Shops Purchase 1,000
Acres.

PUBLISHED BY
GRAHAM BURNHAM
REAL ESTATE
LOANS
INSURANCE AND RENTING
Du Page County Farms and Country Places a Specialty
CHICAGO: 212 Herald Building
TURNER, ILL.



TURNER OFFERS OPPORTUNITIES to manufacturers, mechanics, homeseekers and investors offered by no other point about Chicago at the present time.

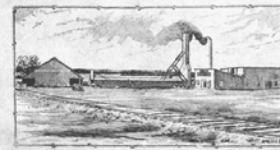
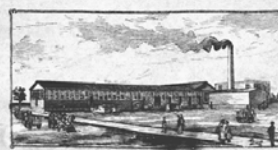
TURNER HAS electric lights, asphalt sidewalks, two wide awake newspapers (the INDEPENDENT and the DEMOCRAT), fine schools, prosperous churches, good society, and numerous flourishing factories that are bringing it to the front rank as a manufacturing point. If you are looking for a factory site, home or paying investment, come to TURNER. Send for Plats and Information as to Factory Sites. Prices of Property, etc., to

GRAHAM BURNHAM

DU PAGE COUNTY LAND AND LOAN AGENT

212 HERALD BUILDING, CHICAGO.

TURNER, ILL.



Investigate: Map #3

1. What is the title of the map?

This map is undated. However, we know it dates before 1896. This is the year the town changed its name to West Chicago.

2. What claims does this map make about Turner? Sort the claims into the table below:

Claims that are FACTS	Claims that are OPINIONS	Claims that are REASONED JUDGEMENTS



Investigate: Map #4

1. What is the title of the map?
2. What year was this map made?
3. Who prepared this map?
4. How has the town grown? What patterns do you notice?
5. Why might the town have grown in the way it did?
6. What new political division is shown on this map that you didn't see on the other maps?
7. Do we still have this type of division in West Chicago today?

Conclusions of the Investigation

By looking at historic maps of the West Chicago area, we are able to infer that...

What questions do you have that are still unanswered?

Standards

Illinois Learning Standards—Social Science

- 16.A.3b Make inferences about historical events and eras using historical maps and other historical sources.
- 16.A.3c Identify the differences between historical fact and interpretation.
- 17.A.3b Explain how to make and use geographic representations to provide and enhance spatial information including maps, graphs, charts, models, aerial photographs, satellite images.
- 17.C.3a Explain how human activity is affected by geographic factors.
- 17.C.3c Analyze how human processes influence settlement patterns including migration and population growth.

Common Core State Standards

CCSS.ELA-Literacy.RH.6-8.7

Integrate visual information (e.g., in charts, graphs, photographs, videos, or maps) with other information in print and digital texts.

CCSS.ELA-Literacy.RH.6-8.8

Distinguish among fact, opinion, and reasoned judgment in a text.